



AGENDA ITEM NO. 7

STOCKWOOD, HENGROVE & WHITCHURCH NEIGHBOURHOOD PARTNERSHIP 9TH DECEMBER 2015

Report of: Becky Belfin, Nature Conservation Officer

Title: S106 Funding for Ecological Mitigation at Hengrove Mounds & Hawkfield Meadow

Contact Telephone Number: 0117 3525656

RECOMMENDATIONS

That the Neighbourhood Committee approves the allocation of £33,970 from s106, for the implementation of actions in the Hengrove Mounds Management Plans

1. The development of part of Hengrove Park, (Community Hospital and Leisure Centre etc), resulted in the payment of £33,970 by the developer. The money is restricted for the following use: Towards ecological mitigation measures in the vicinity of the development.
2. At the time of the application, this funding was intended for the management and enhancement of adjacent wildlife sites: Hengrove Mounds
3. A management plan exist for this site, (attached as Appendix One) which contain a number of habitat management, access improvement, and interpretation actions. These works will help to maintain and enhance these sites for wildlife and for their enjoyment by the public.
4. Following a meeting of the Environment Sub-group, quotes were sought for a number of access improvements, furniture and habitat management work.

5. The total amount of £33,970 is being asked for, to be allocated as follows:

Habitat Management	£244
Furniture (x3 Solid Oak Benches)	£476
Access improvements: <ul style="list-style-type: none"> • Improvements to existing steps • New edged gravel path from existing tarmac path to existing steps (1 on map) • New edged gravel path from interpretation board (at Whitchurch Lane end) northwards (2 on map) • New edged gravel path from interpretation board (at Whitchurch Lane end) westward (3 on map) • New steps from Hengrove Way (4 on map) 	£33,250

The associated map is attached at Appendix Two. A quote was also obtained for laying down tarmac to complete the path from the Park to the Whitchurch Lane entrance (shown in yellow, as number 5 on the attached map), which was £16415. However there was insufficient S106 funds available to include this work, and so it has not been included above.

Legal Information

When councillors decide how the wellbeing fund is spent they should have due regard to the public sector equality duty that applies to all public bodies. This duty is contained in the Equality Act 2010 and came in to force on 6 April 2011. It replaces previous equality duties under the Sex Discrimination, Race Relations and Disability Discrimination Acts.

The duty means that councillors are required to have due regard to the need to:

- Eliminate unlawful discrimination, harassment and victimisation and other conduct prohibited under the Act
- Promote equality of opportunity between different groups
- Foster good relations between people from different groups

The duty covers the following protected characteristics:

- Disability, Sexual orientation, Age, Gender reassignment, Religion and belief; Sex, Race, Pregnancy and maternity.

It also applies to marriage and civil partnership, but only in respect of the requirement to eliminate discrimination and harassment.

Community Management Plan

For Hengrove Mounds

July 2013

Jim O'Shaughnessy



For further information about Bristol's parks
and Hengrove Mounds
Tel. 0117 9223719

www.bristol.gov.uk/parks

Contents

Introduction

<u>Reasons for Producing a Community Management Plan</u>	3
<u>Purpose of The Plan</u>	
<u>Community Engagement and the Consultation Process</u>	4
<u>The Life of the Plan</u>	

Site Description

<u>The Name of the Site</u>	5
<u>Location and Area</u>	
<u>Ownership</u>	
<u>General Site Description</u>	
<u>Accessibility</u>	6
<u>Nature + Biodiversity</u>	9
<u>Cultural Diversity</u>	10
<u>Current Management</u>	

Policy Context

<u>Wild City Project Aims</u>	11
-------------------------------------	----

Plans and Proposals

<u>Entrances and Access</u>	11
<u>Now Soon Later</u>	12
<u>Summary of costings Option 1</u>	14
<u>Summary of costings Option 2</u>	16
<u>Funds and Resources</u>	

Appendix

<u>Appendix 1 Consultation Results</u>	18
<u>Appendix 2 Corporate Communications</u>	21



aerial photo of Mounds and surrounding area prior to construction of college, leisure centre and hospital



aerial photo of Mounds and surrounding area after construction of college, leisure centre and hospital

Introduction

Reasons for Producing a Community Management Plan

Hengrove Mounds is used by local dog walkers and students from local schools and colleges, but the site could attract many more visitors. Most visitors to the Play Park and Hengrove Leisure Complex don't know Hengrove Mounds exists – hence the need for a Community Management Plan and the Plan the Mounds project.

Most of the developments surrounding Hengrove Mounds have high *access for all* standards, however the connectivity and access into and across the Mounds is poor.

A Wildlife Management Plan and SNCI audit already establishes the sites importance for biodiversity and is being implemented by TCV and South Bristol College students. This plan aims to protect and enhance the wildlife value and increase the community usage and long term cultural benefit. An Access Audit written in tandem also shows how the site could be designed with *access for all* as a guiding principal.

Purpose of the Plan

This plan is written with and for local people, and in particular any future Friends of the Mounds group. Those responsible for The Mounds in the future will benefit from plans and targets to work towards. This plan is visionary and ambitious in the long term, and practical and realistic in the short term. Many of the improvements are modular and can proceed as community capacity and funding grows.

An important potential outcome of this plan and the “Plan the Mounds” project is the establishment of a “Friends of the Mounds” group. Parks need people to work in partnership with Bristol City Council to develop sustainable plans and secure new income streams for improvements and maintenance. The consultation process has helped build a network of people and organisations that can help the Mounds in the future and be responsible for it.

This plan will:

- Assist Bristol City Council to look at additional management of the site by setting a possible timeline for actions and *access for all* improvements.
- Enable the council and partners to work towards establishing a “Friends of the Mounds Group” and in the longer term designate Hengrove Mounds as a Local Nature Reserve.
- Allow Council and other stakeholders to prepare a rolling 5-year work plan that will be reviewed annually to manage the site in the medium term.
- Enable Bristol Parks and Friends of The Mounds (or some similarly named independent group) to prepare funding bids to deliver key improvements and engage immediately in basic management
- Help inform all interested user groups and stakeholders about the future for “The Mounds” and how to get involved.
- Identify resources and people responsible for managing Hengrove Mounds in the future

This plan is supported by an existing Wildlife Management Plan and an Access Audit.

Community Engagement and the Consultation Process

This Management Plan has been funded by Bristol City Council's Wild City Project through Access to Natures Lottery Fund and forms part of the Plan the Mounds Project. Wild City is an exciting project linking people with wildlife sites across the city of Bristol.

This report has been produced by Jim O'Shaughnessy working in partnership with Earthworks and Bristol City Council. The Plan the Mounds Team and the Wild City team have been working with local people finding out what they want to see happen at Hengrove Mounds and how it could be managed in the future (See Appendix 1 Consultation Results).

This consultation process conducted during 2012 and 2013 has informed this plan, - site conditions and Bristol City Plans and Policies have also played a key role. The process of researching and writing this plan and the "Plan the Mounds Project" has been key in creating more "ownership" locally and introducing potential new stakeholders, including corporate sponsors (see Appendix 2 Corporate Communication 2012).

Hengrove Mounds is well used by local dog walkers and students who know the site well and have a detailed day to day knowledge of wildlife on the site and the sites history. Some dog walkers have visited the site everyday for decades. Most people visiting other neighbouring facilities at Hengrove Park and have little knowledge of "The Mounds" existence. Attracting people to the Mounds with events, guided walks, Bristol Physical Activity Chain (BPAC) and school/college visits has been a key priority of the consultation and the management planning process.

The Life of the Plan

- This management plan will be adopted in April 2013.
- It will be implemented from April 2013; it works alongside an Access Audit and a Wildlife Management Plan.
- This plan covers a 5-year period, and the work plan will be reviewed annually.
- The whole document will be reviewed in 5 years time (April 2018).

Site Description

Name of the Site

The site is known as Hengrove Mounds and is often called the Mounds by local people. The site has no signs or name boards.



centre of Mounds in wet conditions



*existing pathway across Cinema car park at G**

Location and Area

Hengrove Mounds is a wild corner of the much larger Hengrove Park. It is disconnected from most of the nearby facilities recently developed at Hengrove Park and has no wheelchair access. The Mounds area is on the western tip of Hengrove Park, and falls within Hengrove and Stockwood Neighbourhood Partnership. The site also has boundaries with the Neighbourhood Partnerships of Dundry View, and Filwood Knowle and Windmill Hill. Grid reference ST590685. Area 4 Ha.



Ownership

The whole of the site is owned by Bristol City Council. Surrounding land is also owned by different Directorates of Bristol City Council.

General Site Description

The site is currently managed for nature conservation and is SNCI. The mounds/embankments were formed about thirty years ago when the site was used as a landfill / land-raising site for demolition rubble. On first impressions the site seems like an iron age fort with a circular embankment.



Cinema Entrance A with desire line up embankment



Whitchurch Lane Entrance D

The Mounds area was farmland, meadows and hedges before it became part of Bristol Airport (Whitchurch Airfield) in the 1930's. The Bristol (Whitchurch) Airport closed in 1957 and a large "brown field" site became available to Bristol City Council for development. Today Hengrove Park has been gradually developed and the Mounds area is a remnant of wildness amongst the Leisure Complex, Hospital, Leisure Centre, College and the acres of runway and green mown grass.

Hengrove Park for some locals is described as "*the shrinking donut*", - an area of open space slowly being developed for housing, schools and leisure.

The tipping of waste at the Mounds has created an amphitheatre style landscape with a depression in the middle sometimes referred to as "*the bowl*". The low lying centre is secluded and quiet and the raised circular bund offers visitors views across the city and to Dundry Hill and the Cotswolds. According to site investigations in 1999 the raised embankments (10-15 metres in height) are made up of builders waste and the lower central area is domestic waste with a clay cap. There is a history of domestic waste disposal dating back to the 1950s with the embankments/mounds being created more recently with builders and road waste in the 1970s and 1980s.

Some areas of the embankments have sharp metal objects protruding indicating incomplete or no capping with top soil. Vents for methane and other gases appear at a number of places across the Mounds also indicating a recent history as a landfill site.

Accessibility

There are a number of "desire lines" giving pedestrian access to the Mounds. These are mainly unplanned routes showing local community use. The site has open access with a spectacular circular path around the top of the mounds offering the able bodied and adventures visitors spectacular views. There are no actual public rights of way across the site. The site has no signage or name boards and no properly improved paths. Motor cyclists use the site at weekends and cause a danger for walkers and dogs. Accessibility varies with weather and site conditions, and in wet weather the site is difficult for all.

The site is roughly triangular in shape and is bounded to the West, by Hengrove Way, Hartcliffe Roundabout and Whitchurch Lane. These roadside boundaries are marked with a kick rail at the bottom of the embankment. To the East the Mounds are bordered by a multi screen Cinema, a large car park and Hengrove Plaza restaurants. Also on the eastern side of the site there is a high metal fence keeping the Mounds area separate from South Bristol Leisure Centre and South Bristol College. Many college students use the Mounds as a cut through from home to college or from the Cinema and the fast food restaurants.

Accessibility to the Mounds and Hengrove Park is very good with a Bus Stop at entrance D and an off road cycle lane along Whitchurch Lane and ample parking including disabled parking near entrance A (*the Cinema Entrance*).



entering the Mounds from the Cinema Entrance A



entrance B with Leisure Centre on RHS



Whitchurch Lane entrance D





Subway Entrance E



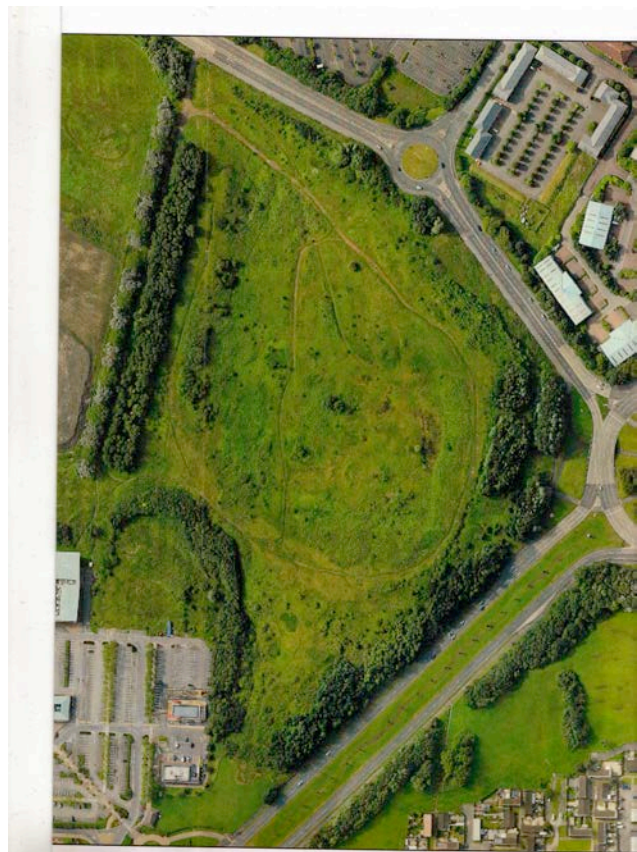
Malago Conservation Society entering site via entrance E

The entrances have been labelled and named below in an aerial sketch which also shows existing paths in pink and potential new / improved paths in yellow / yellow and pink. The site boundary is marked with a red hatched line. There are four main entrances A, B, D and E, and at least 4 possible new entrances (C*, F*, G* and P*). The aerial sketch below is a good summary of potential future access – also see Access Audit for further detail.

- A Cinema Entrance
- B Play Park / Leisure Centre Entrance
- C* Possible new entrance
- D Whitchurch Lane entrance
- E Subway entrance leading to Hengrove Way and roundabout subways
- F* Possible new entrance linking directly to Inns Court and Pelican Crossing
- G* Possible new entrance extending walkway across car park into the Mounds
- P* Possible new entrance at Play Park (not shown on aerial sketch below)



Aerial Sketch showing potential new paths and entrances



aerial photo 2012

At present there is no park furniture, seats, signs, Information/map boards, bins, dog bins etc - some visitors enjoy the challenge of the Mounds, whilst others are unable to enjoy its nature. The desire lines/footpaths on the Mounds are uneven and un-surfaced and are steep in places.

At weekends (usually Sundays) motor bikes use the site, entering and exiting from the Whitchurch Lane entrance D, and the Play Park/Leisure Centre Entrance B.



sharp metal protruding from earth trodden path



entering the Mounds via Subway Entrance E

The Hengrove Mounds Access Audit describes the current access conditions in more detail and suggests proposals to increase accessibility.

The Area Green Space Plan for Stockwood and Hengrove designates the Mounds as a **Natural Green Space** (*site providing people with access to nature. It includes woodland, grassland, scrub, hedgerows and wetland*).

Nature and Biodiversity

Hengrove Mounds is a habitat and species diverse site, and an excellent example of Nature re-colonising an old industrial site. Despite the poor and sometimes non-existent capping a soil layer has slowly grown, even the asphalt is covered in bryophytes (mosses and liverworts)

The sites history as a rubbish tip and now as potential future LNR protect the site from built development.

Translocation of meadow turfs from Hawkfield Meadows in the 80s and natural re-colonisation of the nutrient poor subsoil and rubble has been episodic and only now are trees and brambles extending across the site. The site has a good mix of habitats with grass, scrub and trees all covering about one third of the area. The flora and fauna can be quite spectacular with species rich grassland of wild carrot common across the site. Orchids, Cowslips, knapweed, scabious and veteran buddleia also add too the biodiversity mix.

The Mounds has approximately a third trees, a third scrub and a third grass, - maintaining this mix requires scrub clearance and grass cutting with removal of vegetation keeping nutrients levels low, (this work is ongoing thanks to South Bristol College and TCV). The scrub layer is made up of a variety of brambles and hawthorn and supports many nesting birds and invertebrates.



TCV and South Bristol College clearing scrub



veteran buddleia

Trees along all perimeters form a natural screen from surrounding buildings and roads. Many trees were planted in order to screen the once landfill site – the Poplar trees along path BD for example. Many trees have also naturally seeded and regenerated and are of more wildlife value providing shelter for birds.

Cultural Diversity

Many people use the Mounds today as a place:

- to walk in
- to exercise their dog in
- to walk across
- to run in
- to cycle across
- to be with nature
- to ride their motor bikes in

Some people visiting nearby facilities such as the Hospital, Cinema, Play Park, College, KFC etc don't know *the Mounds* exists.

Local Schools and Colleges use the site for environmental studies and as an open air classroom, South Bristol College also help manage the site in partnership with TCV and Bristol City Council. Work parties on the site also provide people with a chance to learn new skills and develop an understanding of nature conservation management in an urban context.

The wildness and the close proximity to the Play Park make the Mounds an ideal area for natural play and picnics, with parents and children using the Subway Entrance E as a short cut to the Wheels Park and the Play Park.

Healthy Walking Groups use the during dry conditions; often starting walks from the nearby Leisure Centre, Wildlife Groups also offer guided walks around the site.

Dog walkers are prolific and have a useful day to day knowledge of the site and could form part of a new friends group. Litter and dog mess are an issue but could be much worse considering the close proximity to fast food eateries and the absence of dog poo bins (the closest dog poo bin on old runway near Play Park).

Current Management

The main conservation objectives

- Woodland – thin trees and replant with native species and allow some natural regeneration of specimen field grown trees.
- Scrub – annual clearance and removal during winter
- Grassland – annual cutting and removal of hay crop

See Hengrove Mounds Wildlife Management Plan for current management and further species details.

Current management consists of 6 days TCV and South Bristol College bramble cutting and scrub clearance and 4 days WWT grass cutting. Further details available in Hengrove Mounds Wildlife Management plan.

There are no improved paths apart from BD which is now un-maintained (this path was part of the airport infrastructure). The scrub clearance helps the paths remain open and helps them dry out. Some trees need thinning out along pathway BD.

Some gravel has helped improve route DE and the approach to entrance B.

At present Hengrove Mounds is well managed for wildlife.

The day-to-day management of Hengrove Mounds rests with Bristol Parks, - there is no friends group.

Policy Context

Hengrove Mounds is protected by Nature Conservation policy NE5 in the Bristol Plan owing to its status as a Site of Nature Conservation Interest (SNCI).

Bristol City Council has a policy of *access for all* (see Access Audit) and has an ambition for Hengrove Mounds to become a Local Nature Reserve (LNR) (see Area Green Space Plan).

Hengrove Mounds is designated as a Natural Green Space in the Area Green Space Plans.

Plans and Proposals

A number of ideas and plans have been generated by the Plan the Mounds consultation in 2012 and 2013 (see Appendix 1). Previous consultations relating to the Area Green Space Plan have also have generated ideas and suggestions. The site's topography, soil profile and biodiversity also help frame what can and can't happen, for example;

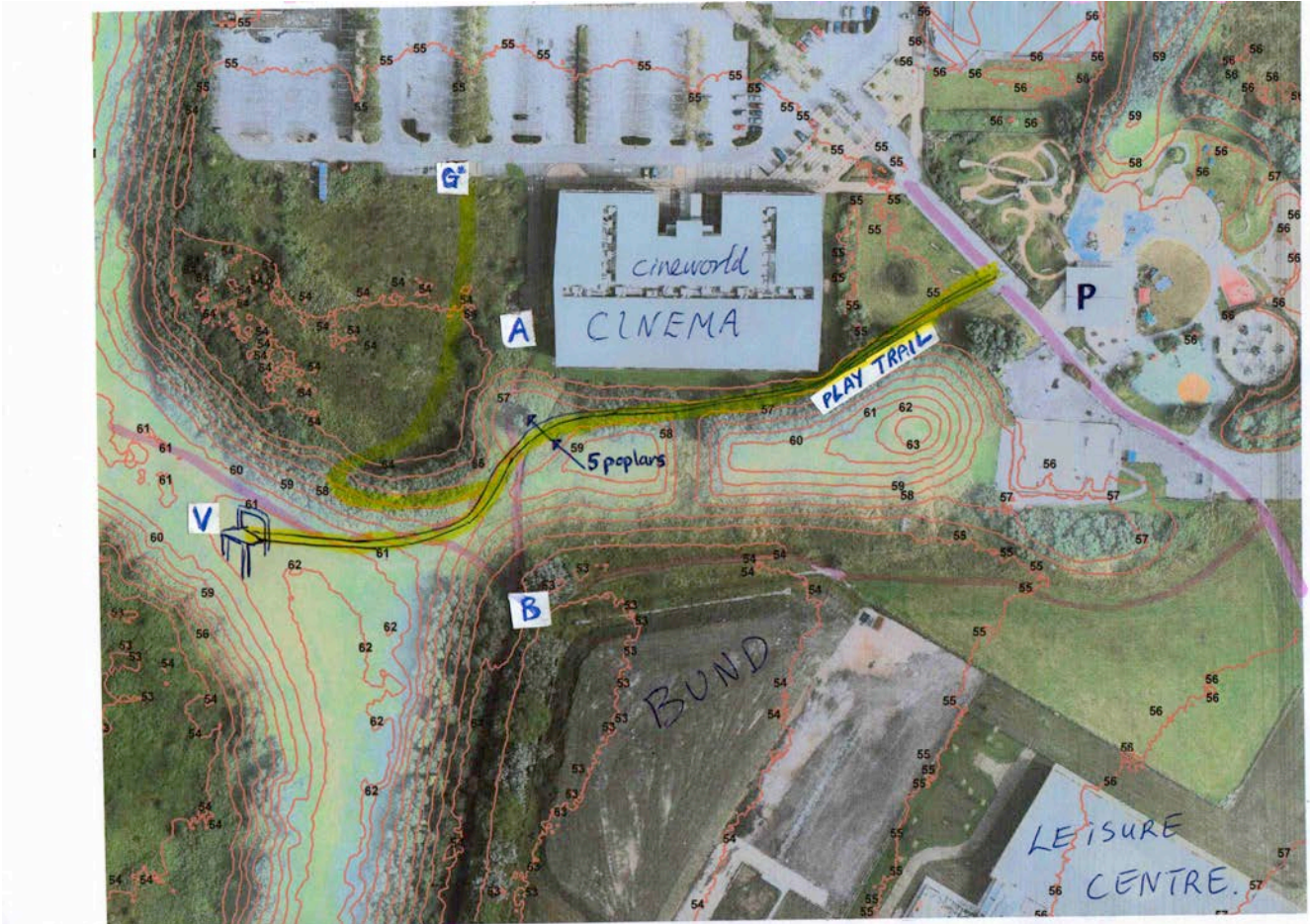
- growing food or excavating may disturb the rubbish beneath our feet.
- laying a new surfaced path may disrupt Slow Worms, and precautions need to be followed.

The designation in the Area Green Space Plan indicates the character of the site should remain natural.

Entrances and Access

There are 4 key entrances into the Mounds (A, B, D and E); they all need to be welcoming and as accessible as possible whilst being secure against motorbikes. Entrances D and B could be wheelchair friendly, entrance D could also have a disabled parking bay and radar key.

A number of possible new entrances and pathways could also improve access for example C*, F*, G* and P*. These new entrances and pathways are “off site” and require a wider cross directorate partnership. All proposed entrances and associated pathways can achieve high access for all standards with slopes on paths less than 1:10 (10%). The Play Trail and P* could achieve a slope less than or equal to 1:20 (5%), and gives direct access to the Play Park and the rest of Hengrove Park.



Proposed new entrance and Access for All Pathway linking Play Park to Viewing Platform

A key feature of the site is the steep embankments which restrict access in and out of the site. This aerial photo of the northern section has a contour overlay showing the embankments which have a 30% slope in some places. The Play Trail can achieve a high access for all standards with an incline of less than 1:20 (5%).

Measured and improved paths would greatly benefit the Healthy Walking Groups based at the Leisure Centre who are unable to use the site when wet.

Now Soon Later

The Plan has been inclusive of ideas from the community and from ideas generated by schools and colleges and part of the process of using the plan is to choose what suits the Mounds Now, Soon and Later. The NOW, SOON, LATER prioritisation is an ongoing process and both relates to necessity and ability to deliver, for example if something is easy to do but important then it's likely to be put into a NOW category. This process needs to be a realistic process as without a responsible person and available resource actions won't happen. Attaching a “who” to an action starts to make the vision become a reality.

To start the process of *time lining* the improvements at the Mounds a 5 year plan is detailed below. The Now timeframe is the 1st six months, SOON up to 18th months and LATER is up to 5 years.

NOW < 6 months	SOON <18 months	LATER < 5 years
Set up Friends of Mounds Group from community and business stakeholders	Spring Event hosted by Friends Group and BCC	Funding bid by Friends Group
Site Safety Check - + Removal of sharp metal objects from paths and any dangerous trees along path BD	Path BD re-surfaced Path BP surfaced (off-site) linking Mounds to runway and rest of Hengrove Park, Play Park, Hospital, Leisure Centre.	New access for all path from Play Area to 5 Poplars and to Viewing Platform V1
Continue current management scrub clearance and grass cutting with TCV South Bristol College	New Entrance D (Whitchurch Lane). Wheelchair friendly with key. – with Cycle parking Improve all existing entrances	Disabled off road driver bay at D, adopted by High Ways for maintenance/instalment (not counted in costings)
Secure site against motor bikes entrance D and B (and Hengrove Park in general). Warnings notices and issue of section 59 by Police	Monthly events walks workshops	Bristol Sculpture Trail around the circular path, plus Play trail linking Mounds with Play Park
	Access for all path up to View Point V2 from entrance D. Picnic bench at V2 and levelled area.	New access for all sealed path from D, V2, E, V1, P. With associated Play Trail linking Play Park to 5 Poplars and Mounds.
Steps at A, B and E	Seats at V E and midway between D and E	Viewing Platform / bird hide / outdoor classroom constructed at V
Sunday Ranger Walk from Play Park	Picnic bench at the 5 poplars Bird Boxes and Bat Boxes with Alzheimer Society	Measured walking, running route from Hospital, College and Leisure Centre.
Encourage dog waste to be taken home / or binned at bin on runway with signs	New dual use bin at Cinema Entrance and or Whitchurch Lane entrance	Site leaflet + Interpretation Boards
Litter Pick	Sign at Subway Entrance E	Signage + way marking linked to “functional art / craft” project
Cut trees back from path BD creating clear walking tunnel (1.2m wide x 2.1m high)	New Entrance / welcome sign at Cinema Entrance A.	Possible new entrances at C*, F*, G* - linked to new developments and levy.

Summary of Costings option 1

ITEM	£ per unit	number	Cost
Pathways			
Path re-construction BD dual use access for all sealed path and cycle way (2m wide)	150 / m2	310m x 2	£ 93,000
Sealed path construction DV2 (2m wide)	200 / m2	150m x 2	£ 60,000
Sealed path construction including drainage V2,E,V1 sealed path with passing places every 50m (1.2 m wide)	200 / m2	760m x 1.2	£182,400
Sealed path V1 to 5 poplars (2m wide)	200 / m2	60m	£ 12,000
Wooden rustic Steps at A, E and from B to 5 poplars and B towards View point one V1 (4 sets of steps)	200 / m2	100m 1.2	£ 24,000
Play Trail from 5 poplars to Play Park (mainly off site costs)	200 / m2	200m x2	£ 80,000
Entrances			
D Whitchurch Lane Entrance Improvements for wheelchair access (key at Leisure Centre, Hospital, BCC Parkview reception – or radar key)	£ 25,000	1	£ 25,000
Signage at A Cinema Entrance and E Subway Entrance	£ 500	2	£ 1,000
Sign / map board at B or in approach to Mounds	£ 1,000	1	£ 1,000
Site Leaflet	£ 1	1,000	£ 1,000
Play Trail entrance + map board at P (off site costs)	£ 5,000	1	£ 5,000
Furniture			
Park Bench / Seating metal	£ 900	3	£ 2,700
Picnic Table at 5 Poplars and V2	£ 1250	2	£ 2,500
Supply install Dual use Park Bin	£ 700	1	£ 700
Viewing Platform / outdoor class room at V	£ 30,000	1	£ 30,000
Sub Total			£ 520,300
Maintenance estimate at approx 10% / year for 5 years	£ 50,000	5	£ 250,000
TOTAL {estimate only}			£ 720,300

New entrances at G* and C* have not been counted as they depend on possible future development and a partnership approach to ensure future integration with the Mounds.

A new entrance at F* and an associated path up to the View Point could link the pedestrian crossing on Hengrove Way connecting Inns Court

The costs could be reduced by;

- not counting “off site” costs
- not installing a bin (instead temporary signs asking people not to drop waste and to pick up their own dog poo and deliver to existing runway bin or take home)
- reducing the length of new Access for All Pathways to BD, DV2, and 5 poplars to V1 (on site portion of Play Trail).
- replacing Viewing Platform and outdoor classroom with a 3rd park bench

The costs are modular and can be added to or subtracted from to suit resources and needs. In this example the viewing platform is replaced by a picnic bench. This re-costing does achieve access for all standards up to the view points V1 and V2 (see vision sketch below), but has not improved accessibility around the top path and does not include an outdoor classroom / hide area at V1.



aerial vision sketch Option 2 showing un-improved top path and no Viewing Platform

Summary of Costings option 2

ITEM	£ per unit	number	Cost
Pathways			
Path re-construction BD dual use access for all sealed path and cycle way (2m wide)	150 / m2	310m x 2	£ 93,000
Sealed path construction DV2 (2m wide)	200 / m2	150m x 2	£ 60,000
Sealed path V1 to 5 poplars (2m wide)	200 / m2	60m	£ 12,000
Wooden rustic Steps at A, E and from B to 5 poplars and B towards View point one V1 (4 sets of steps)	200 / m2	100m 1.2	£ 24,000
Entrances			
D Whitchurch Lane Entrance Improvements for wheelchair access (key at Leisure Centre, Hospital, BCC Parkview reception – or radar key)	£ 25,000	1	£ 25,000
Signage at A Cinema Entrance and E Subway Entrance	£ 500	2	£ 1,000
Sign / map board at B or in approach to Mounds	£ 1,000	1	£ 1,000
Site Leaflet	£ 1	1,000	£ 1,000
Furniture			
Park Bench / Seating metal	£ 900	3	£ 2,700
Picnic Table at 5 Poplars, V2 and V1	£ 1250	3	£ 3,750
Sub Total			£ 222,200
Maintenance estimate at approx 10% / year for 5 years	£ 20,000	5	£ 100,000
TOTAL {estimate only}			£ 322,200

Funds and Resources

Wild City Budget (£ 20,000 available in 2013)
 BCC Parks Maintenance
 Neighbourhood Partnership Funds
 Landfill Tax
 Section 106
 Maintenance charge
 Corporate Sponsorship
 Hello Hengrove
 Local Sustainable Travel Fund
 Local Active Travel Grant (available in 2013)

When future residential/retail development goes ahead in Hengrove Park new entrances could be developed at C* and G*, an additional levy could also be charged for the upkeep and maintenance of the Mounds Nature Reserve.



potential new C entrance looking towards Mounds C* looking from mounds towards College*

A “maintenance charge approach” could also be developed with existing businesses in Hengrove Park, - businesses may wish to sponsor specific items such as gateways, paths and bins (see Appendix 3 Corporate Communications). Section 106 budgets and existing Wild City budgets are currently available

The Local sustainable Travel Fund may fund a new dual use path along path BD.

A friends group is vital as many funding sources require some sort of community organisation to apply.

Appendix

Appendix 1 Consultation Results

PLAN THE MOUNDS – HENGROVE MOUNDS NATURE RESERVE PUBLIC CONSULTATION SUMMARY OF SUGGESTED IMPROVEMENTS

IMPROVEMENTS	SUGGESTED BY:	COMMENTS/IDEAS
<p>PATHWAYS – upgrade perimeter path to ensure ease of access for all – and lends itself upgrading for wheelchair users –</p> <p>disability pathway</p> <p>STEPS from outer ring into bowl area where there is currently a steep path down slope into bowl STEPS for easier access</p> <p>‘Don’t put too many paths in like they did at Vassalls – only just where needed to help people’</p>	<p>Healthy Walks Group, April 11 Playwork workshop participant.</p> <p>26 May event day participant</p> <p>21 Feb event participant</p> <p>BLC geography students</p> <p>South Bristol Academy students</p> <p>BTCV – mid weeks group</p> <p>21 Feb event participants</p> <p>11 April Play park visitor</p>	<p>chippings or even tarmac which will tone down in time</p> <p>nice path for pushchairs</p> <p>gravel or bark for top path and bark path down into bowl</p> <p>post 16 students with learning disabilities would like paths to be less muddy</p> <p>safer than existing steep muddy path</p>
SEATING	<p>11 April Play park Workshop</p> <p>BLC art students</p>	<p>nice walkway with benches</p> <p>seats on top of</p>

	<p>26 May participants</p> <p>Healthy Walks Group, Bridge Learning Campus Primary.</p> <p>21 Feb event participant</p>	<p>Mounds to enjoy views, make from resin not wood (vandalproof)</p> <p>Seating, picnic areas and information boards</p> <p>Benches like the willsbridge mill dramway ones</p>
ENTRANCES with bike racks	BLC Geog and Art Students	Need to be made more welcoming – with signage, sculpture, bike racks and stiles – replace gate with wooden arch
INTERPRETATION	<p>Healthy Walks Group, BLC Geography Students.</p> <p>26 May event participants</p>	<p>Map on board at entrance with information stand on site with wildlife pictures (butterflies)</p> <p>Information posts around site</p> <p>Leaflets</p>
SIGNING	Healthy Walks Group	Waymarking – posts to sign you which way to go using arrows
SCULPTURE/INTERACTIVE/FITNESS TRAIL	<p>26 May event participants</p> <p>BLC Geog Students</p> <p>Tony Watkin, South Bristol Hospital , Public Liaison Lead.</p> <p>Naomi Button/Karen Tremblett, Hengrove Leisure Centre staff</p>	<p>Around site</p> <p>Between site and hospital and leisure centre</p> <p>To promote linkage between Hospital, Leisure Centre and Play park</p> <p>Hospital and Leisure Centre both support</p>

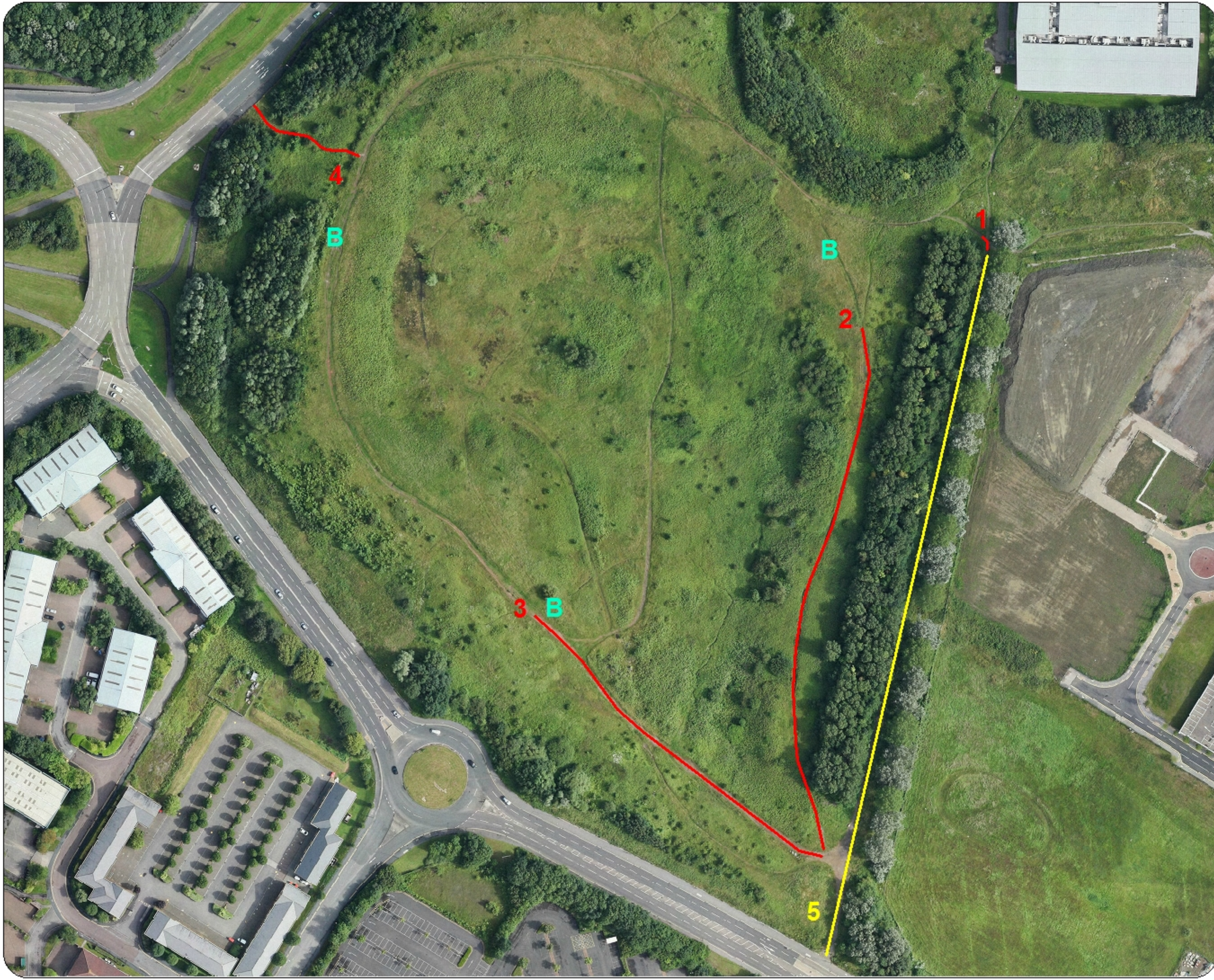
	<p>Elderly participants</p> <p>26 May participant</p> <p>21 Feb event participant</p>	<p>Celebrate the sites past – avian history in any interpretation opportunities</p> <p>Monthly walks and events</p> <p>Friends group to help with maintenance</p>
--	---	---

Peter Margerum/Ruth Worsley
Project Consultation Consultants
Earthworks e: rworsley@tiscali.co.uk

Appendix 2 Corporate Communications

Hengrove Mounds – Summary of Corporates

Organisation	Local Contact Details	CSR Agenda	Initial Engagement
Premier Inn Hengrove BS14 0HR	0871 527 8166	Part of the Whitbread Group and their corporate programme 'Good Together'. Their corporate aim is to reduce their impact on the environment but there is nothing that specifically looks at improving the local area beyond their hotel. Source Corporate Website	Website only
Frankie & Benny BS14 0HR	Local Manager Karl 01275 834725	Charity news from employees on the website and nothing specifically on Corporate Social Responsibility (CSR). Source Corporate Website	Visit made to the local manager to talk about the development of a management plan for Hengrove Mounds. The purpose was to raise awareness and enquire whether F&B wanted to contribute to its development. Ideas such as sponsoring an entrance to the mounds was floated. The local manager advised that approaching the Head Office would be the best way forward. Head Office is London 0845 612 5003
KFC	-	The material environmental issues are farming, transfats and litter. 'While you sleep we sweep'. KFC carry out nightly litter picks and are supporters of 'Keep Britain Tidy' and 'Love where you live' campaign. Source Corporate Website. All of which tie in well with the local environment.	Visit made to the local manager to talk about the development of a management plan for Hengrove Mounds. Mark Hoddin is the franchise owner and rarely at the restaurant. In his absence advised to contact Head Office.
Cine World	Local Manager Sarah Boyce	Good examples of CSR but nothing on the local environment. Source Corporate Website	Visit made to the local manager, Sarah Boyce. Advised that approaching Head Office was the way forward. Cine World Head Office 0208 987 5000 corporate@cineworld.co.uk
McDonalds	01275 831271	Litter is a key component of 'Our World' and they sponsor council litter bins and provide bins outside the restaurants. Source Corporate website	Visit made to local store but manager Emma Page not available and advised to contact Head Office. 08705 244622
Gala Bingo	01275 835333	Nothing on their website in relation to CSR issues.	Website only.



Bristol City Council Hengrove Mounds Access Improvements

The provision of information by Bristol City Council does not imply a right to reproduce or commercially exploit such information without the Council's express prior written permission. Reproduction or commercial exploitation of information provided by the Council without its express permission may be an infringement of copyright.

The council is unable to grant permission to reproduce or re-use any material that is the property of third parties. Permission to reproduce or re-use such material must be obtained from the copyright holders.

© Crown Copyright and database right 2012.
N Ordnance Survey 100023406.
ENVIRONMENT & LEISURE

Scale : @A3 1:1,587
Date: 28/10/2015



**NEIGHBOURHOODS
DIRECTORATE**

Environmental and Leisure Services
Brunel House Phone: 0117 922 3719
St George's Road bristolparks@bristol.gov.uk
Bristol BS1 5UY www.bristol.gov.uk/parks